

TURNING POINT SYSTEMS GROUP

Laser Scanning Service Providers

Turning Point 6480 North Industrial Road
Milwaukee, WI 53223 USA
Phone 414-353-8774 Fax 414-353-4887

www.turningpointssystemsgroup.com

HDS Sales • Leasing • Rentals • Training



Turning Point System Group offers consultant Sales, Leasing, Rentals and Training on HDS (High Definition Surveying) equipment. – Laser Scanners

Turning Point Systems Group has compiled list of clients that perform HDS Scanner surveying services. This list contains a portion of our HDS providers. They will offer you scanning services tailored to your specific needs. Turning Point Systems Group is not surveying service provider. We do support firms getting into Laser scanning with sales, leasing and training. If you would like to be added to this list or are interested in adding HDS Scanning Services to your business portfolio please contact us at Turning Point Systems Group.



Petroleum Process plant Valdes Engineering Company

100 W. 22nd Street
Suite 185
Lombard, IL 60148
(630) 792-1886 www.valdeseng.com

Contact: John Cardone
(630) 792-1886 x1064
jcardone@valdeseng.com

Scanners: Leica HDS2500, HDS3000, HDS6000



Valdes Engineering Company (VEC) provides a full range of professional engineering services to companies located in the greater Chicago-land area. Our client base includes leading companies in the petroleum, chemical, power and industrial manufacturing industries.

A key component to our product offering includes High Definition Scanning / Surveying (HDS) services. VEC has executed well over 5000 scans on multiple projects of widely varying size and complexity. This laser surveying technique allows our staff to gather existing conditions in a format that can be utilized in a 3-D design environment. This technology allows VEC to map and model large complex facilities including structures, piping, etc. that are not easily accessed due to equipment congestion and especially extreme heights.

Software Compatibility:

All hardware is compatible with the full suite of Leica products, which include:

- Cyclone
- Leica Cloudworx for AutoCad
- Leica Cloudworx for PDMS
- Bentley Cloudworx for Microstation/PDS.
- Bentley Cloudworx for SmartPlant Review.

The Leica HDS 6000 Scanner allows for integration with the LFM software suite, which includes:

LFM server
Integrates into
PDS, SmartPlant
Review, PDMS, Microstation and
AutoCad via
integration modules.
LFM Viewer and Viewer Lite
LFM Modeller

Experience: 14 Years Preliminary work areas: Civil Engineering – Construction Engineering

Forensic Mapping DJS Associates, Inc.

1603 Old York Road Abington,
PA 19001 Contact Steven M.
Schorr, P.E. Phone 215.659.2010

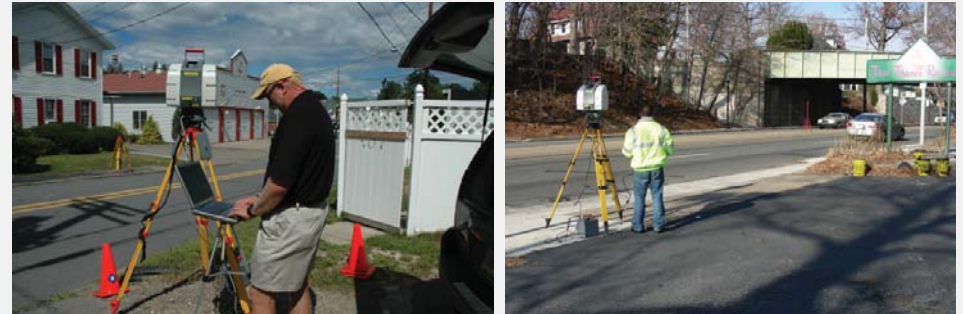
sms@forensicDJS.com

Number of and type of scanners HDS 3000; HDS 2500

Experience over 5 years with Leica Scanners and Cyclone software

Preliminary work area Civil, Forensic;

Specialty Roadways, Vehicles, Buildings;



Sites/Environments: Measurement of Hazardous Areas that Cannot be Shut Down or Easily Traversed
Such as Bridges, High-Traffic Areas, Rock Faces and Intersections Obstructed by Foliage. Measurements of Complex Mechanical Operations such as Pipelines and Chemical and Nuclear Power Plants for As-Built Draw ings.

Vehicles: Laser Scanning Technology for Highly Accurate, Highly Detailed Comparison of Vehicle Crush Profiles. Still-Image Data Sheets, Two-Dimensional Diagrams, Three-Dimensional Models, Fly-Thru Animations and Three-Dimensional Animations Produced from Data Collected.

Structures: Measurements of Building Facades, Building Collapses and Structural Failures.
Documentation of Remnants of Building Fires, Parking Lots, Shipping Docks and Stairways.

Transportation Dynasty Group, Inc.

Dynasty Group, Inc. is a professional engineering and land surveying firm that specializes in civil design and analysis, construction engineering services, surveying, industrial surveying services, and 3-D laser scanning, among other disciplines.

Offices: 205 W. Wacker Drive, Suite 1450, Chicago, IL and Beijing, China

Contact: Chris Siebern, PE, PLS, Senior Engineer
Email: csieb@dynastygrp.com
Phone: (312) 704-1970

Number of and types of scanners: 5 Scanners - Phase and Time-of-Flight capabilities.



Experience: Dynasty Group's professional engineering staff has experience in providing services for a variety of projects including highways, railways, airports, hospitals, industrial sites and parks. The firm works with many public and private entities including the Illinois Department of Transportation, Union Pacific Railway, BP Products of North America, Fluor Enterprises, Inc., Chicago Department of Transportation and many others. Dynasty Group's mission is to provide its clients with superior professional services using advanced technologies.

Qualifications: Dynasty Group, Inc. staff includes Professional Engineers, Professional Land Surveyors, and 11 full-time field crews. The company is a City of Chicago certified MBE, as well as an IL-UCP (METRA) certified DBE.

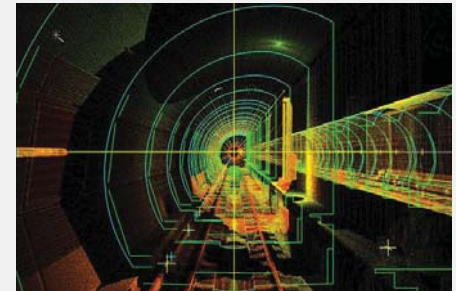
Management Commitment: Dynasty Group, Inc. provides superior professional surveying services with quality, integrity and professionalism. Utilizing advanced surveying and computer technology, we pledge to be responsive to our clients through the quality and timeliness of our services.

Industrial Process systems DLZ

DLZ has 18 offices throughout Indiana, Illinois, Kentucky, Massachusetts, Michigan, and Ohio.

Contact: Kurt S. Schmiegel, P.E., Industrial Division Manager
Phone: 219-764-4700
Email: kschmiegel@dlz.com

Number of and type of scanners: One (1) HDS-Leica 3000 3-D Laser Scanner with Cyclone Software; One (1) HDS-Leica 6000 3-D Laser Scanner with Cyclone Software



Experience: ALTA/ACSM Land Title Surveys; Boundary surveys; Horizontal and vertical control surveys; Topographic surveys; Hydrographic surveys - lake and river soundings; Site surveys for construction; As-built surveys; Architectural surveys; Settlement Control Monitoring; Determination of pre- and post-dredging conditions; Aerial photographic controls; Prismatic volume computations - bulk material inventories; Route selection; Right-of-way acquisition; Acquisition for public utilities; Legal research and testimony; Landfill construction/closure; GPS surveying

Primary work area: Topographical, boundary, construction, hydrographic, and close tolerance machinery and optical tooling surveying (setting and realignment) Specialty: Industrial and Manufacturing facilities and process systems

Will the process out source scan data: Scan data is currently processed in the DLZ industrial office in Burns Harbor, Indiana.

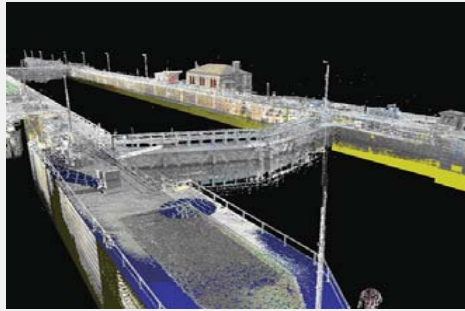
Special company notes: The DLZ Corporation is a minority owned business employing nearly 630 people including engineers, scientists, planners, and surveyors with a proud history spanning over 90 years. The DLZ Industrial office consists of as many as twenty-two (22) full-time experienced survey crews performing professional land surveying, construction surveying, and machinery and optical tooling providing 24-hour business critical services around the globe for over 40 years. DLZ utilizes various survey technologies from conventional levels, optics, and more mainstream systems such as GPS and robotic total stations, to today's high-end precision technologies including 3-Dimensional HDS Laser Scanners and High Precision Laser Trackers.

Transportation
Martin & Whitacre, Surveyors & Engineers, Inc.

1508 Bidwell Rd.
P.O. Box 413 Muscatine, IA 52761

Contact: Gary Whitacre or Matt Krause Phone: 563-263-7691
gwhitacre@martin-whitacre.com or mkrause@martin-whitacre.com

Number of and type of scanners: 1 HDS 3000



Experience: 4 years

Primary work area: Midwest Region Specialty:
Transportation, Architectural, Plant Process, Volumetric, Civil

Number of offices: 2

Will the process out source scan data: Yes

Special company notes: Providing scanning and modeling services to public and private sectors since 2003.
See our article "Scanning the Levees" in the August 2007 issue of P.O.B. or our web site at www.martin-whitacre.com

Municipal
Kapur

Milwaukee, WI
Contact: Chris Dietz
Phone 262.767.2747 Email cdietz@kapur-assoc.com

Number of and type of scanners: 1 HDS 3000



Experience: O'Hare International Airport Tower-Chicago CTA Redline Grand and State Subway renovation-
Milwaukee Historical Railway Bridge Scans

Preliminary work area Municipal – Transportation – Land Development – Urban Redevelopment

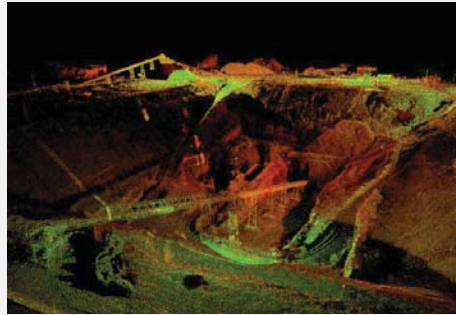
Specialty Planning/Design, Construction Management, Survey, GIS/Asset Management

Number of offices: 3

Civil Engineering
Manhard Consulting LTD

Contact David Withaar – National Director of Surveying
Phone 630-691-8500
Email dwithaar@manhard.com

Number of and type of scanners (1) ScanStation II



Experience 35 Years

Preliminary work area Civil/Sanitary Engineering, Surveying, Environmental Services, Water Resources, Construction Services, Planning, Landscape Architecture, Water & Waste Water

Specialty – Residential and commercial development

Number of offices 9 Will the process out source

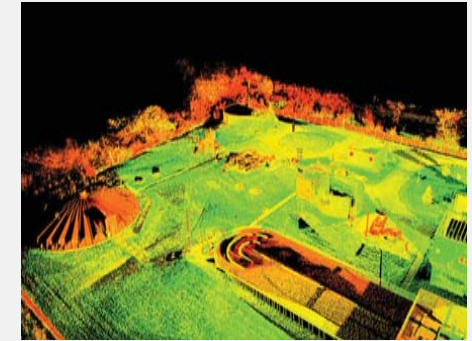
Scan data – YES Special company notes

Standardized equipment and procedures through out all offices stream line the work flow from field to office.

Municipal
Strand Associates Inc.

Contact Chad Kopecky
Phone 608-251-4843
Email chad.kopecky@strand.com

Number of and type of scanners (1) ScanStation 1



Experience Years of Experience and Vast Service Capabilities

Preliminary work area Municipal/General Civil – Water/Waste Water – Transportation – Building/Facilities and Construction Services

Specialty Specialized Services in Municipal/General Civil Engineering and Environmental Science

Number of offices 10

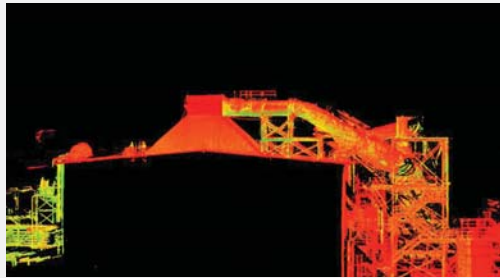
Special company notes

Strand Associates, Inc. is dedicated to helping our clients succeed through excellence in engineering

Industrial Measurement
Falk PLI Engineering and Surveying

Contact Mark Deardorff
Phone 219-762-7024
Email mdeardorff@falk-pli.com

Number of and type of scanners (3) HDS6000, HDS4500, HDS3000



Experience Over a Decade

Preliminary work area Industrial Measurement – Civil Engineering – Land Surveying

Specialty 3D Modeling for Metals, Rolling Mill, Power and Petroleum Industries

Number of offices - 1

Will the process out source scan data - Yes

Transportation
American Surveying & Engineering, PC

Contact Tom Balsler
Phone 815-288-6231
Email t.balsler@americansurvey.com

Number of and type of scanners (2) HDS ScanStation I, HDS ScanStation II



Experience 30 years

Preliminary work area Professional Surveying, Transportation Surveying, Transportation Design, Subsurface Utility Engineering

Specialty Complex Surveying Projects

Number of offices - 3

Will the process out source scan data - yes Special company notes

American Surveying & Engineering (ASE) was an early adaptor of High Definition Surveying for the Civil Engineering Transportation Sector. As such, ASE pioneered early “Best Practices” approaches which became the standard for use of HDS in the Transportation Industry.