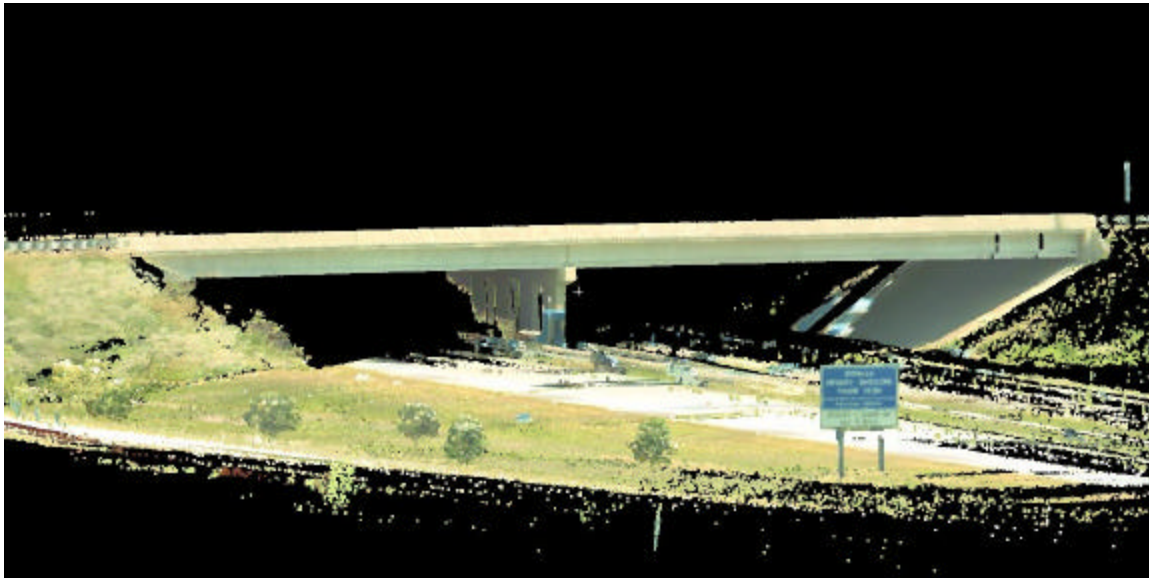
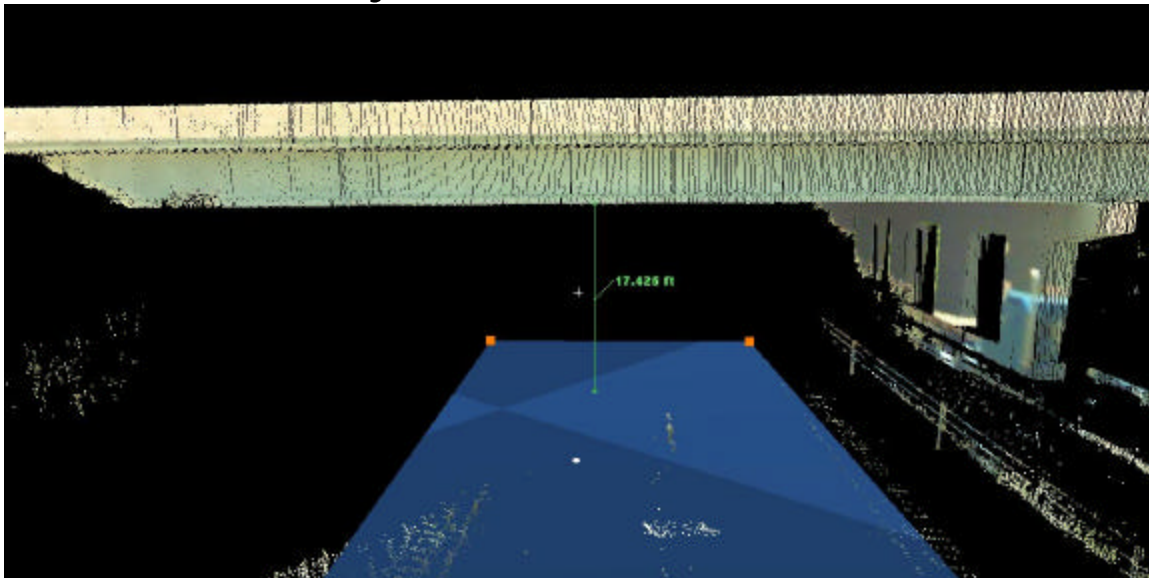


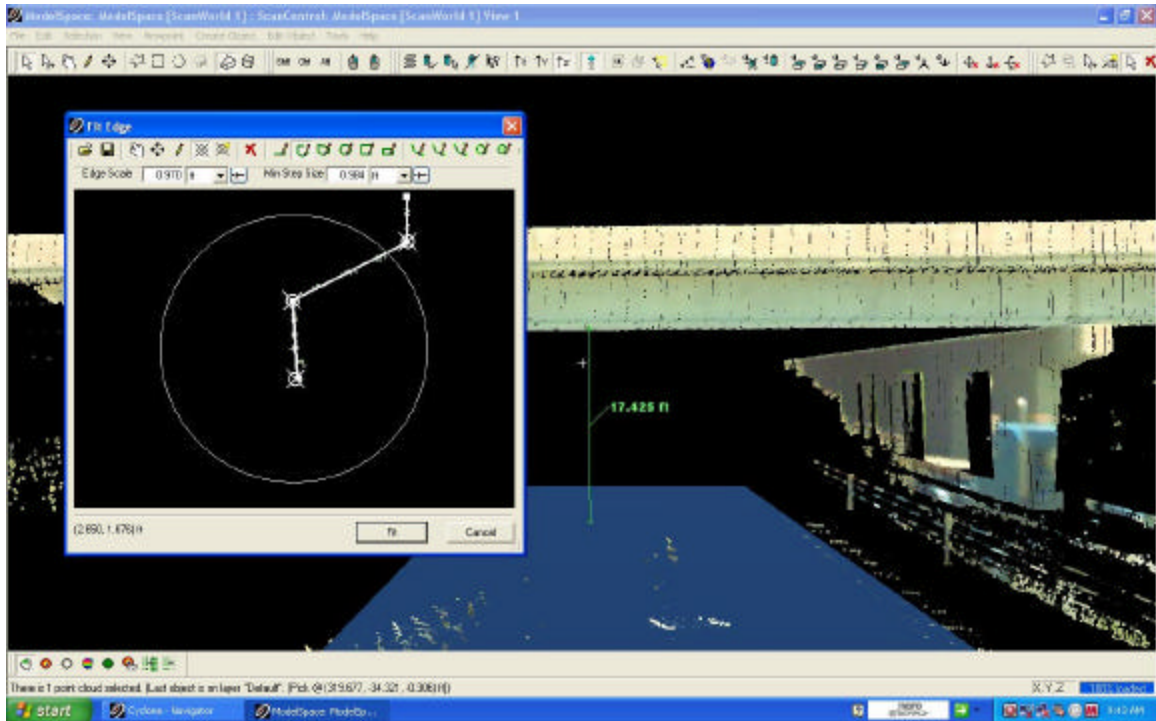
## Measuring a Bridge using a laser scanner



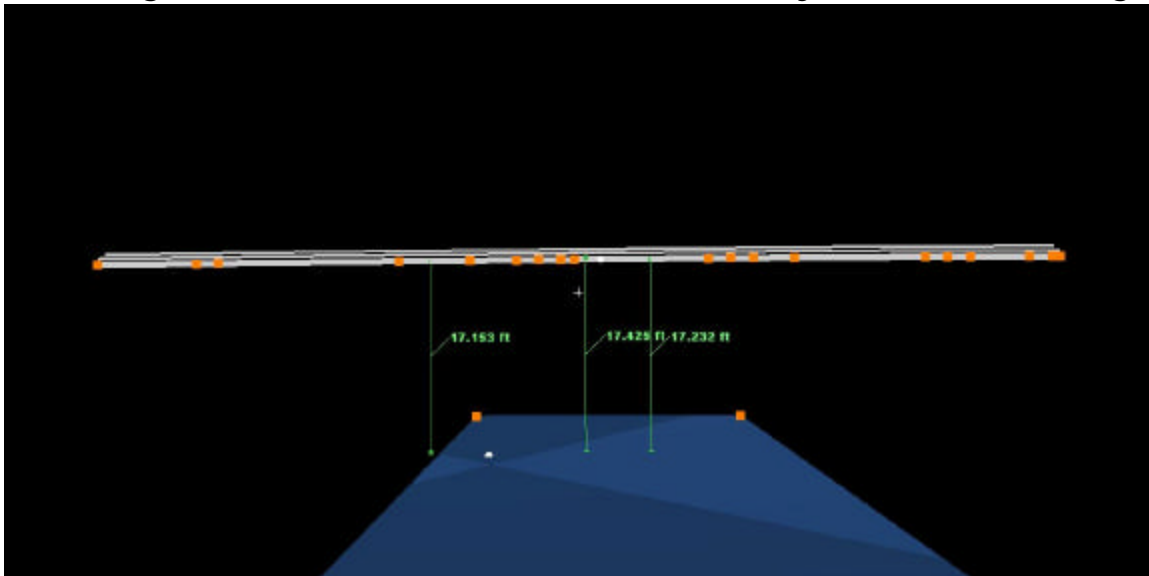
Scan Distance to center support from scanner  
361.15ft. Surveyors well out of traffic flow.



Bridge clearance from pick point 17.425ft



**“Fit edge” software solution from Leica Cyclone solves edge**



**Less height is found in each lane. Fit edge gives better clearance values than picking points in field by eye.**

**Contact info: Cliff DeTemple 414-353-8774 Turning Point**